

## DATASHEET

CATEGORY: DAT CONTROLER® PLUS  
 NAME: **DAT CONTROLER® PLUS 30 - ESE Air Terminal**  
 REFERENCE: **AT-1530**

### PRODUCT DESCRIPTION

DAT CONTROLER® PLUS 30: Early Streamer Emission air terminal. Advance time: 30 µs. Material: Stainless steel AISI 316L.



Advance time: 30 µs obtained according to UNE21186:2011 tests.  
 AENOR product certification.  
 Withstand current higher than 200kA (10/350µs wave).  
 Certificate of performance under rain (Insulation > 95% according to EN 60060).  
 No external power supply required.  
 Protection radius up to 90 meters according to NF C 17102 and UNE21186.  
 Certificate of use in explosive atmospheres (ATEX).

## DATASHEET

Reference	AT-1530
Length	120 mm
Width	120 mm
Height	551 mm
Weight	4635 g
Materials	AISI 316L stainless steel
IP Code	IP67
Working temperature	-25 °C to 88 °C
Internal insulation	Polyurethane resin
Fixing	M20 male thread

Type of air terminal	Electropulsator (emits impulses)						
Certified advance time ( $\Delta T$ )	30 $\mu s$						
Protection radius (m)							
Height for protection radius	2	4	6	8	10	20	60
Protection radius (m) for Level I	19	38	48	49	49	50	50
Protection radius (m) for Level II	22	44	55	56	57	59	60
Protection radius (m) for Level III	25	51	64	65	66	71	75
Protection radius (m) for Level IV	28	57	72	73	75	81	90
Tested current	20 x 200kA + 5 x 250kA (10/350 $\mu s$ wave)						
Standard deviation ratio ESE/Simple rod	< 0,8						
Standards	Complies with UNE 21186:2011; NF C 17-102:2011; NP 4426:2013						

> Certifications and tests

AENOR Product Certification of accordance with UNE 21186 standard

Withstand current certificate for 20 impacts of 100 kA (10/350  $\mu s$ )

Certified advance time

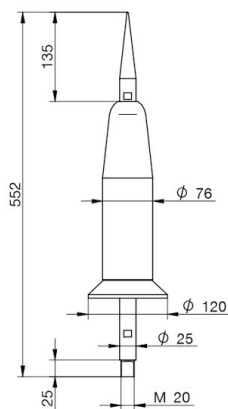
Certificate of unalterable performance under rain applying the standard EN 60060-1:2012.

Radius protection certificate and regulation compliance (UNE 21186, NFC 17-102).

Certificate of use in explosive atmospheres (ATEX).

Manufactured according to ISO 9001 and following ISO 14001 environmental management standard.

> Diagram (mm)



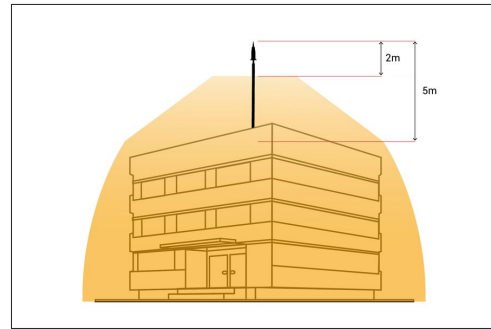
## INSTRUCTIONS

### > INSTALLATION

ESE air terminal protection radius depends on its height related to the surface to be protected, its advance time  $\Delta T$  and the protection level.

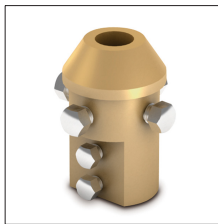
The installation of DAT CONTROLLER® PLUS air terminals should follow the standards NF C 17-102:2011, UNE 21186:2011 and NP 4426:2013.

The air terminal should be at least 2 meters higher than any object to be protected.



## OTHER INFORMATION

### > RELATED PRODUCTS



**AT-011A**  
Brass adap.piece M20,  
1½"mast+cable/tape



**AT-004G**  
ATLOGGER