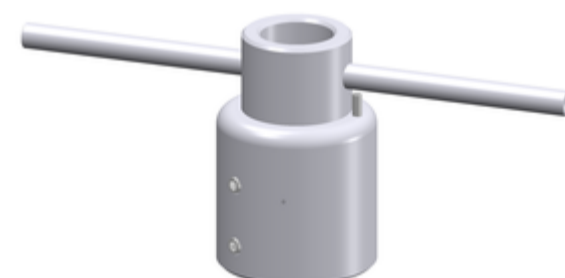


ACCESSORIES

Northring for First Class Windfahne

Part number: 509619

The adapter is installed between mast and sensor. The adapter is aligned to north by means of a bearing tube. After alignment the wind direction sensor is mounted onto the adapter. A pin in the adapter and a north boring in the base of the wind direction sensor guarantee that the sensor is aligned to north. There is no re-alignment necessary with replacement of the sensor.



Specification

Part number: 509619

General	
Length	75 mm
Material	Alluminum anodized (AlMgSi1)
Weight	0.25 kg
Fixing boring	for mast Ø 35 mm for sensor Ø 35 mm

Versions

No other versions of this product are available.

Accessories

No accessories are available for this product.

